



BUREAU D'ÉTUDE EN CONSTRUCTION MÉTALLIQUE

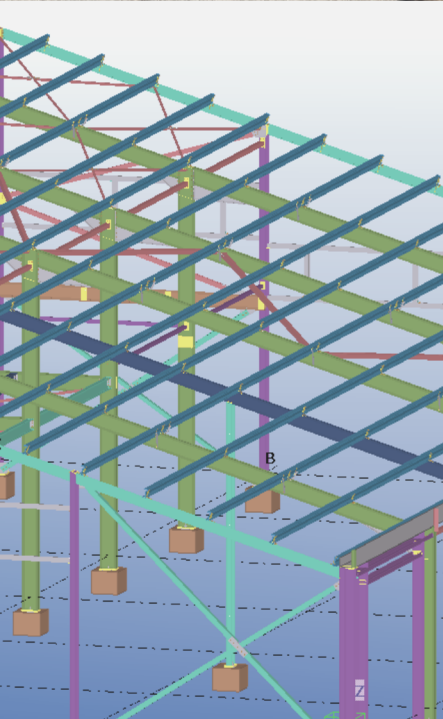
Address: No 273 Dôi Cân
Street, Ba Dinh District, Hanoi,
Vietnam

E-mail: a.salem@be-cm.com

Tel: 0033 (0)1 84 73 05 46

Fax: 0033 (0)9 72 46 87 62

www.be-cm.com



ABOUT OUR COMPANY

PROFILE

BECM Company was established in September 2014 to specialize in consulting and designing construction works for steel and concrete structures. Over 5 years of continuous development, BECM has gained a stable foothold in the field of construction design while being reliable for prestigious domestic and foreign partners with a series of high quality completed projects.

SERVICES

- Advising in the first phase
- Calculating and optimizing
- Planning for execution and manufacturing

PARTNERS

- TEKLA
- AUTODESK
- Arche Effel Melody
- Robobat
- CTICM

DIRECTOR : ALEXIS SALEM

Structural Engineers, Draftsmen
Projectors with solid experience in
France

➔ TECHNICAL EXPERTISE and
COUNSELING

➔ CALCULATION and OPTIMIZATION
OF STEEL STRUCTURES

➔ EXECUTION AND
MANUFACTURING PLANS



CLIENT REACH



**Professional
Service**



**Excellent
Service**



**Friendly
Service**



**Online
Service**



QUALITY POLICY & STAFF QUALIFICATIONS

QUALITY POLICY

- Ensure that BECM meet customers' specified requirements as well as the statutory and regulatory requirements;
- Apply new scientific methods and latest technologies to construction design;
- Communicate Quality Policy to all BECM personnel;
- Provide necessary resources for achieving, maintaining and continually improving the efficiency of QMS.

STAFF QUALIFICATIONS

Highly qualified staff with solid experiences from France: structural engineers, drafters...

Highly experienced team of engineers - skillful at utilizing cutting edge engineering software for structural analysis and calculating detailed drawings. Promise to provide customers with products and services of top quality.

MISSION

BECM Company was established with the desire to become a reliable and reputable address that provides customers with products and services of quality at reasonable prices through creativity and continuous innovation in designing.

VISION

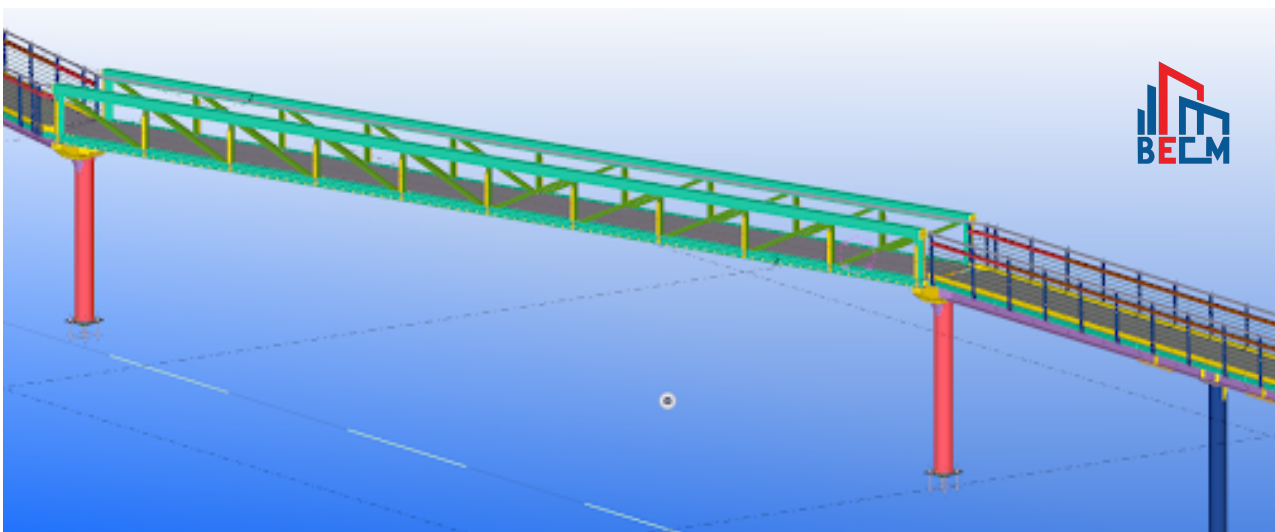
Based on the strategy of sustainable quality - development investment, BECM strives to become a prestigious company that specialises in consulting architectural design and building constructions in the world.

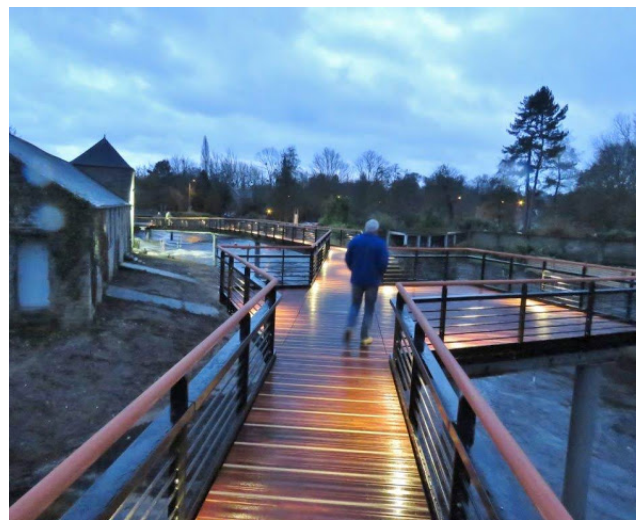
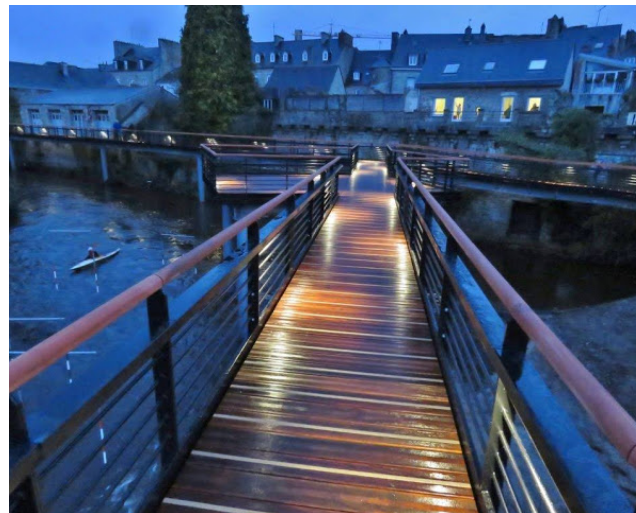


TYPICAL PROJECTS OF BECM

PASSERELLE DU TRIEUX - 140 TONS

Address: GUINGAMP - FRANCE

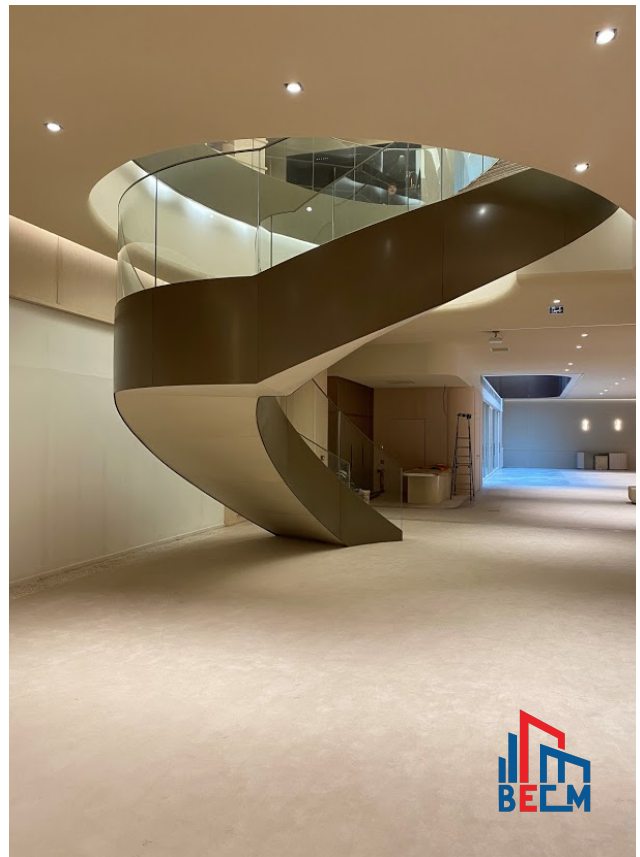
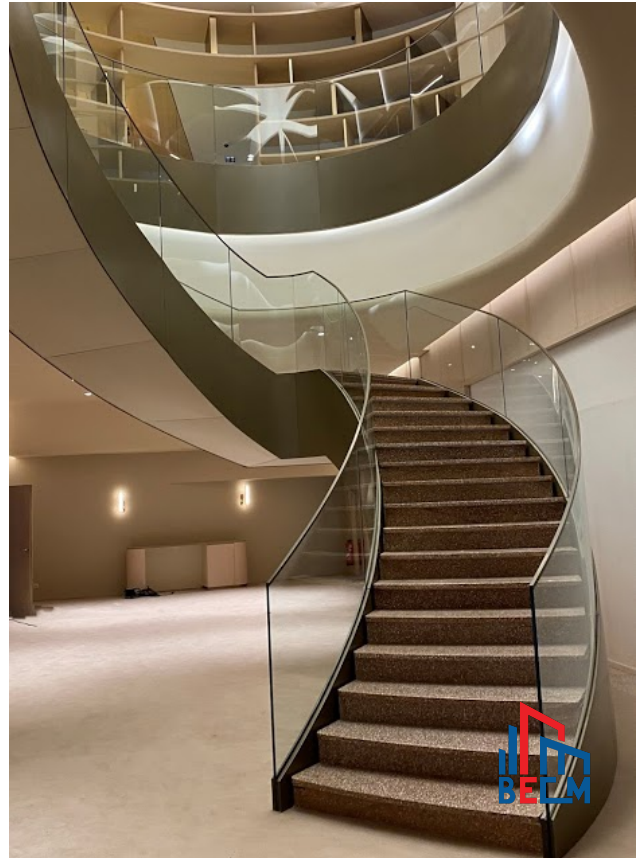




LA BALEINE

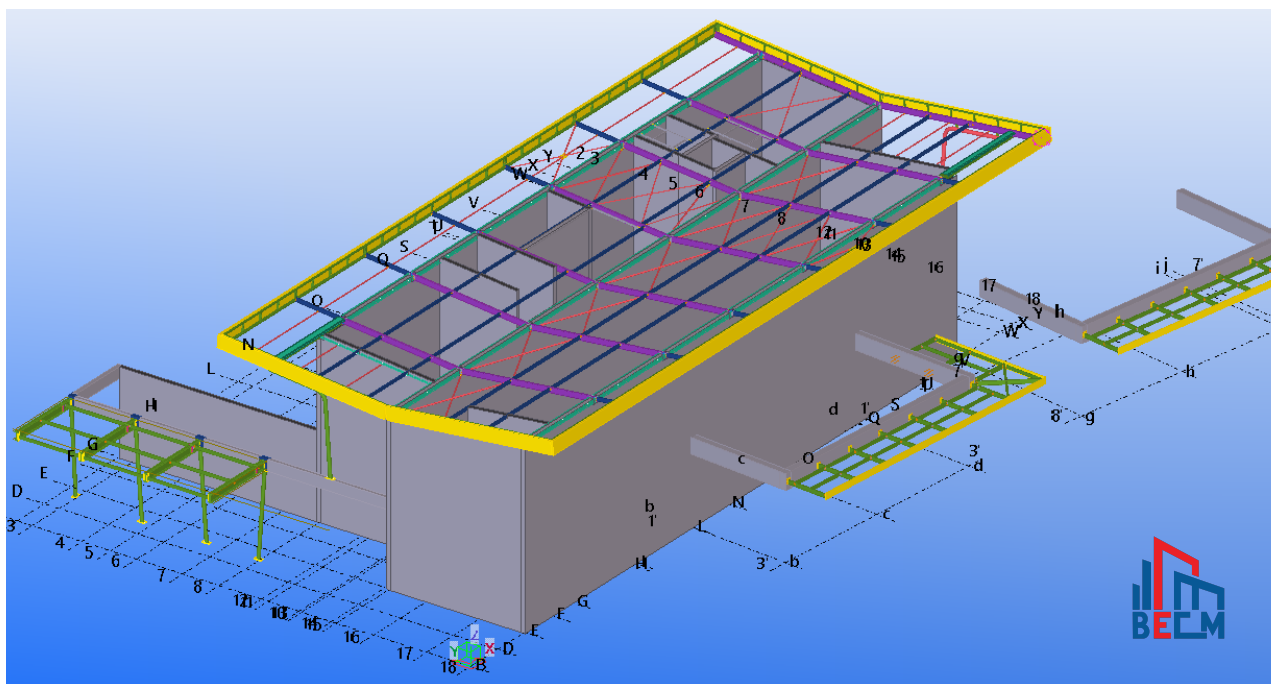


MATIGNON



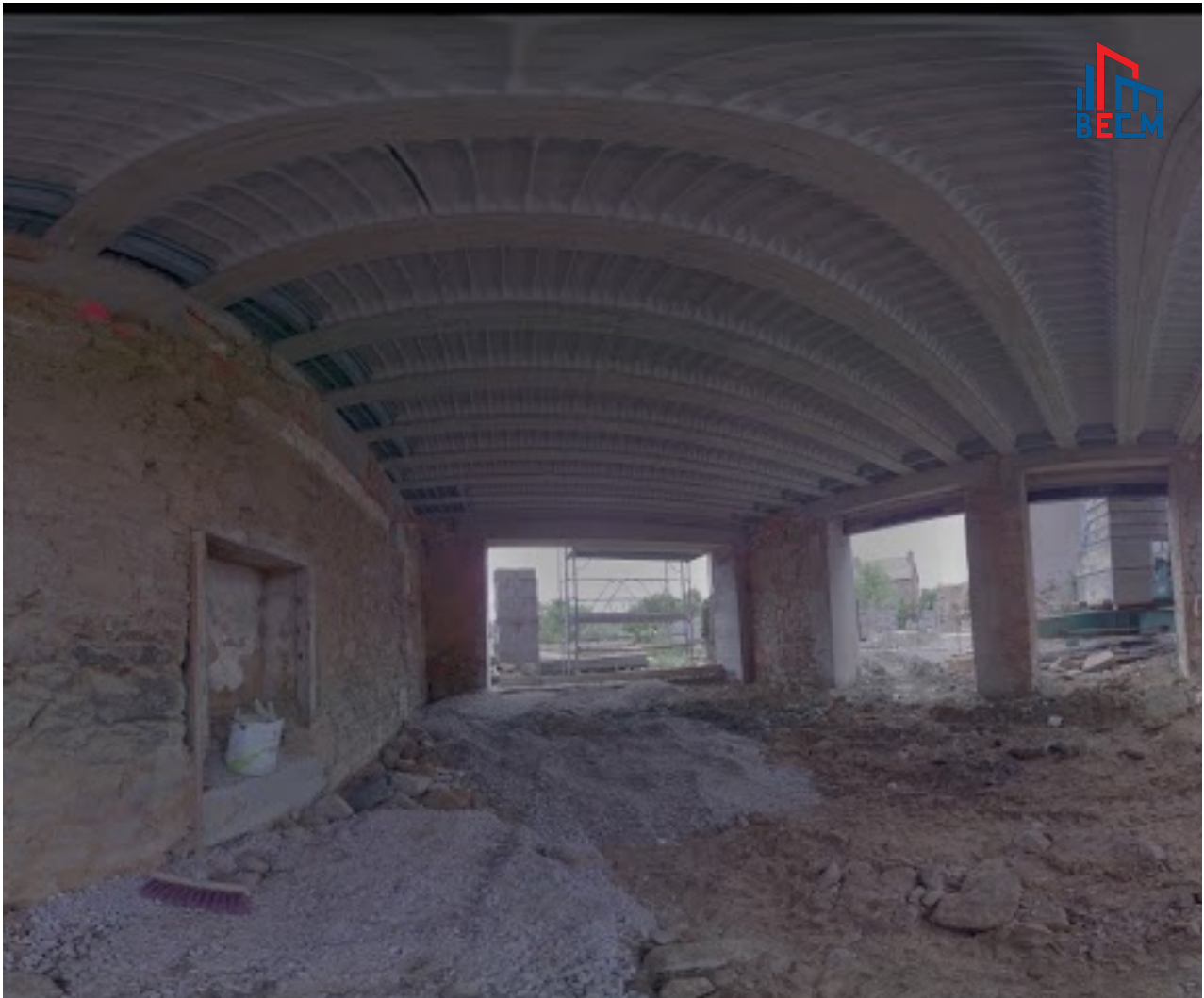
DELTA DORE – 27 TONS

Address: Le vieux chêne - 35270 Bonnemain - FRANCE



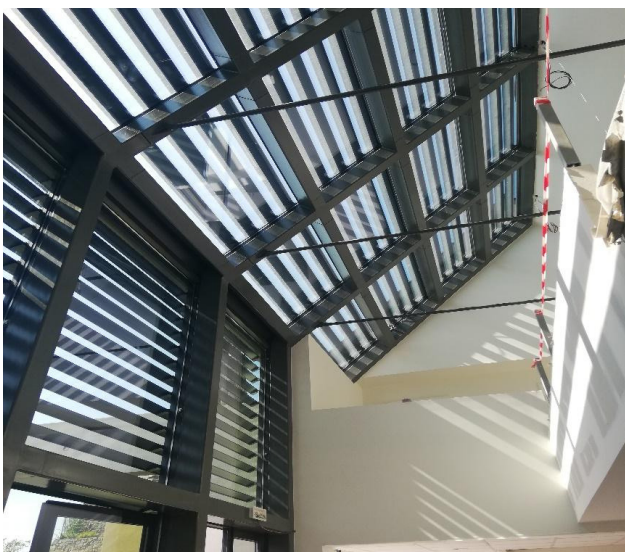
PRESBYTÈRE

FRANCE



PRESBYTÈRE

FRANCE



PIANENCQUE

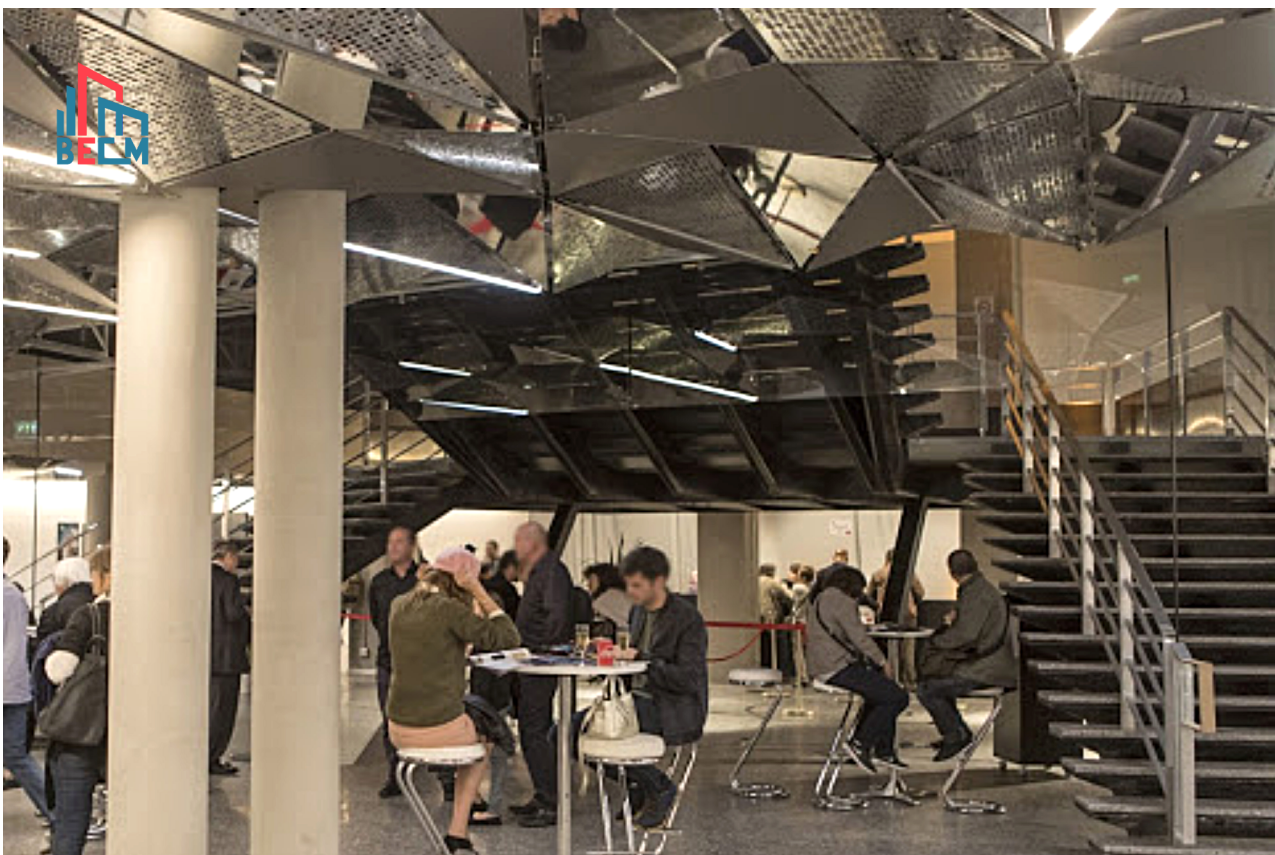


SALLE DE SPORTS

FRANCE



ESC ITALIE



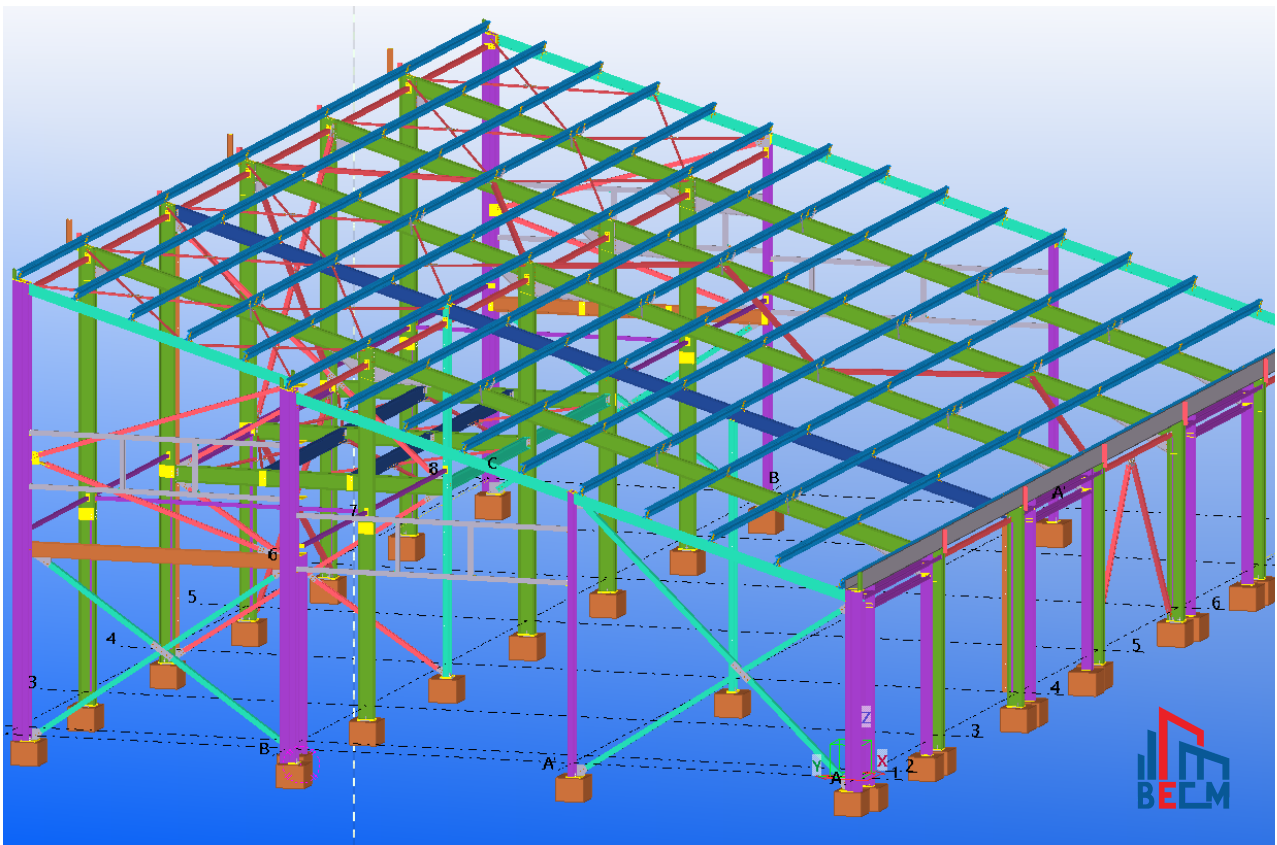
ACODI_GYMNASSE ROANNE

FRANCE



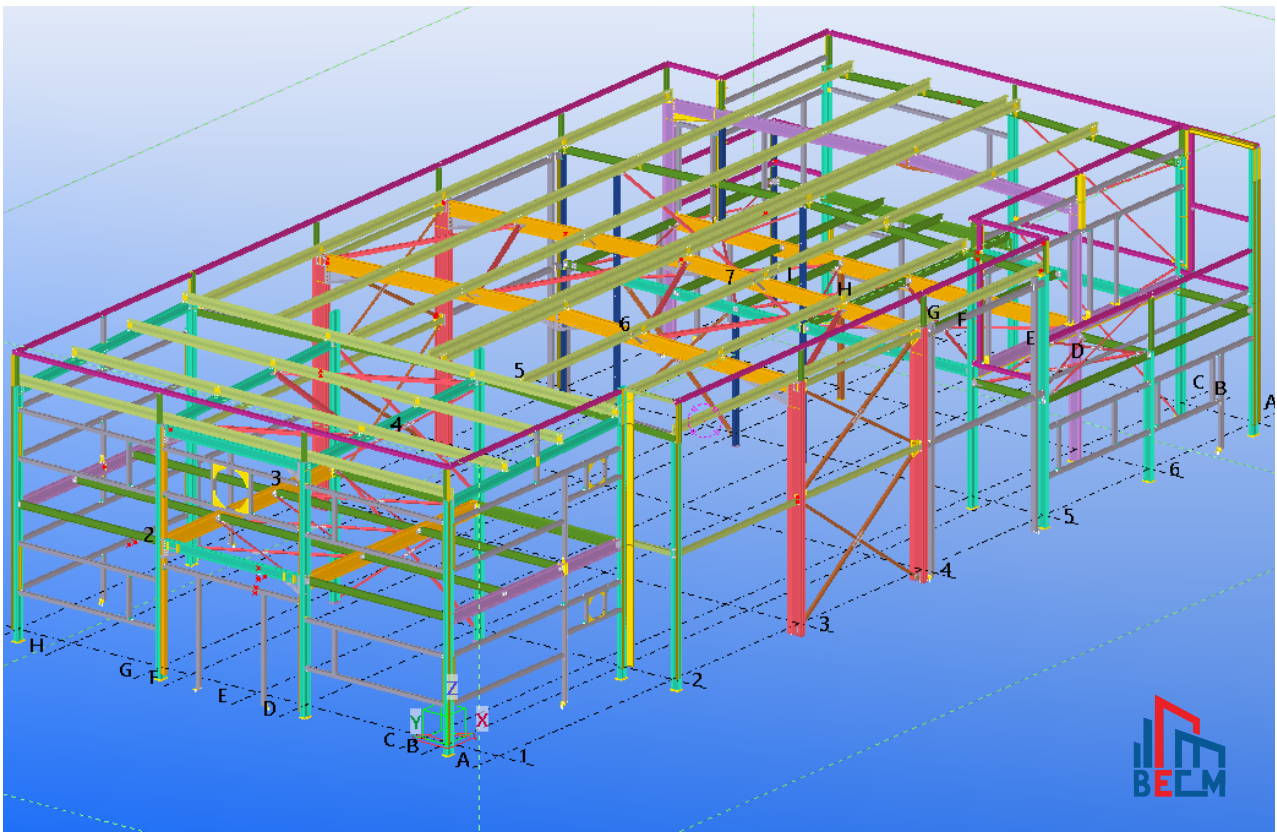
SARL DB INVEST - 28 TONS

FRANCE



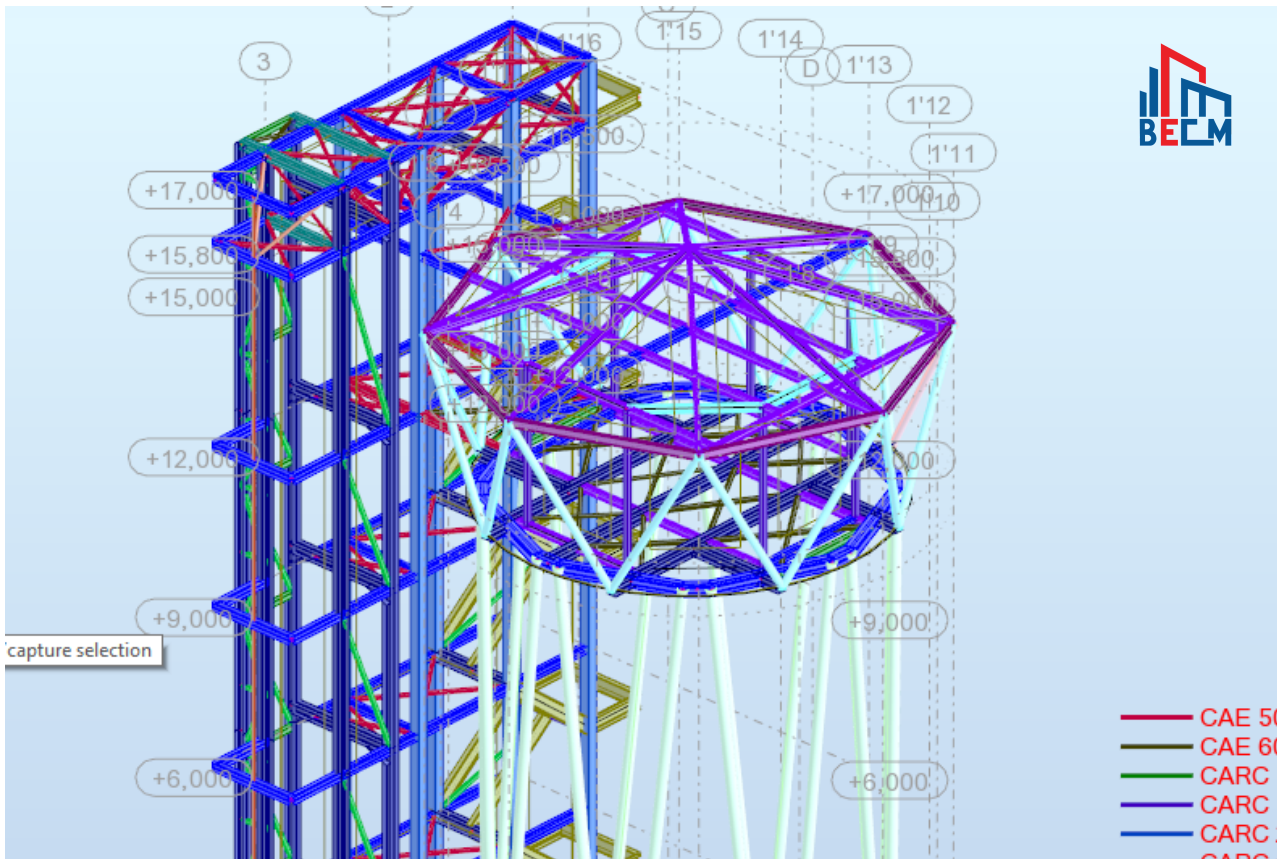
CAMADIAN - 24 TONS

FRANCE



SKYBAR – 40 TONS

HAI PHONG - VIETNAM



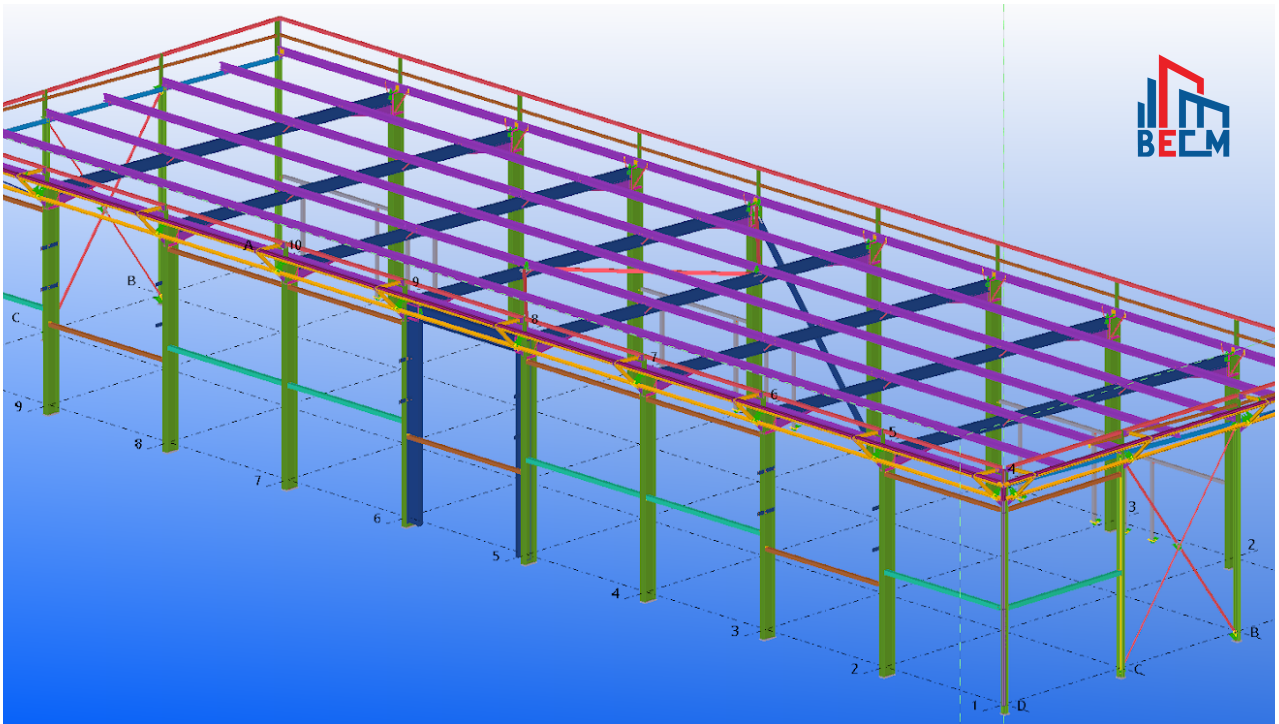
NEWLIFE



MATLO



OTHER PROJECT





BE-CM

CONTACT US

*Our company is always
ready to work with domestic
and foreign companies*

**FOR FURTHER ASSISTANCE PLEASE
CONTACT US:**

Address: No 273 Dôi Càn
Street, Ba Đình District,
Hanoi, Vietnam,

E-mail: a.salem@be-cm.com

Tel: 0033 (0)1 84 73 05 46

Fax: 0033 (0)9 72 46 87 62

www.be-cm.com

